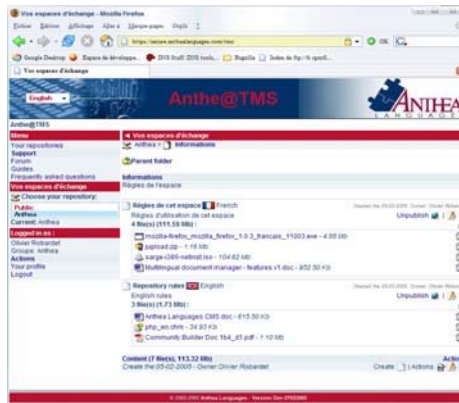


Translation Localization Terminology Content management

:: Your multilingual translation management solution

ANTHE@TMS



In order to streamline the process of managing and updating our customers' multilingual documents, we use a very powerful web-based translation management system: **ANTHE@TMS**.

Any authorized user in your company can access our document management platform to view, add and update documents and objects in any language.

Each time a document is added or updated, it is compared against existing older versions. The system detects similar text segments that can be re-used from these text files. **Only updated sections of the document will be translated.** The system generates an alert to a pre-identified project manager at ANTHEA, with the instruction to translate it into all other languages of the system, or to send you a budget quote for your approval.

Managing the various language versions of your documents is therefore significantly easier. **ANTHE@TMS** helps you **save time and money**, while ensuring consistency of your corporate contents in all languages.

Centralized
document management

Secure access to confidential data

Access level of each user defined
by System Manager

ANTHEA Languages provides a full range of services in the area of international business, including **multilingual content management** and **translation** in more than forty languages, software and website **localization**.

At ANTHEA our mission is to help each of our customers overcome cultural, linguistic and economic barriers to become a significant player in the ever expanding world of international business.



ANTHEA Languages

30 rue de Londres
F-75009 PARIS, France

Tél. +33(0)1 4016 1687
Télécopie +33(0)1 4526 5380

Info-fr@anthealanguages.com

Boulevard Piercot, 33
B-4000 LIEGE, Belgique

Tél. +32(0)4 344 4566
Télécopie +32(0)4 344 6595

info@anthealanguages.com

100 Allstate Parkway, Suite 304
Markham, ON, L3R 6H3, Canada
Tel. (800) 880-1731
Fax (905) 480-0695

www.anthealanguages.com

ISO 9001
CERTIFIED
QUALITY
SYSTEM



	Features	Requirements
General	<ul style="list-style-type: none"> □ Compatible with all type of contents: articles, procedures, plans, technical manuals, links, pictures... □ Easy on-line access with any standard Internet browser □ Document exchange and retrieval from any location, inside or outside the company. □ Powerful combination of content management capabilities and professional translation services. □ System based on an open source solution: it is constantly improved by an international team of IT engineers and developers. □ Data transmission security: SSL encryption. □ LAMP environment (Linux/Apache/MySQL/PHP) 	<p><i>High speed internet connection</i></p> <p><i>Internet browser *</i></p> <p><i>Java Virtual Machine*</i></p> <p><i>*Latest version of software supplied free of charge by ANTHEA</i></p>
Language management	<ul style="list-style-type: none"> □ The system supports all languages. One of our project managers is designated to processing translations into one or several languages. □ The project manager is automatically informed that an element has been modified or added into the system. □ For each language, the relevant translator receives the instruction to download, translate and add the document into the system. □ The users can view a translated version as soon as it is added into the system. □ The system automatically displays all the elements in the language of your choice. □ As the system is centralized, the whole document database is accessible from everywhere around the world, through the Internet. □ Each user is allowed either to view, upload, download or modify documents, according to the parameters that have been set up in his/ her User Profile. 	<p>The full Translation Management package includes:</p> <ul style="list-style-type: none"> □ Professional hosting on a server with high speed access. □ A team of designated project managers at ANTHEA □ One or several IT engineers at ANTHEA, dedicated to system administration and regulation. □ Training and support